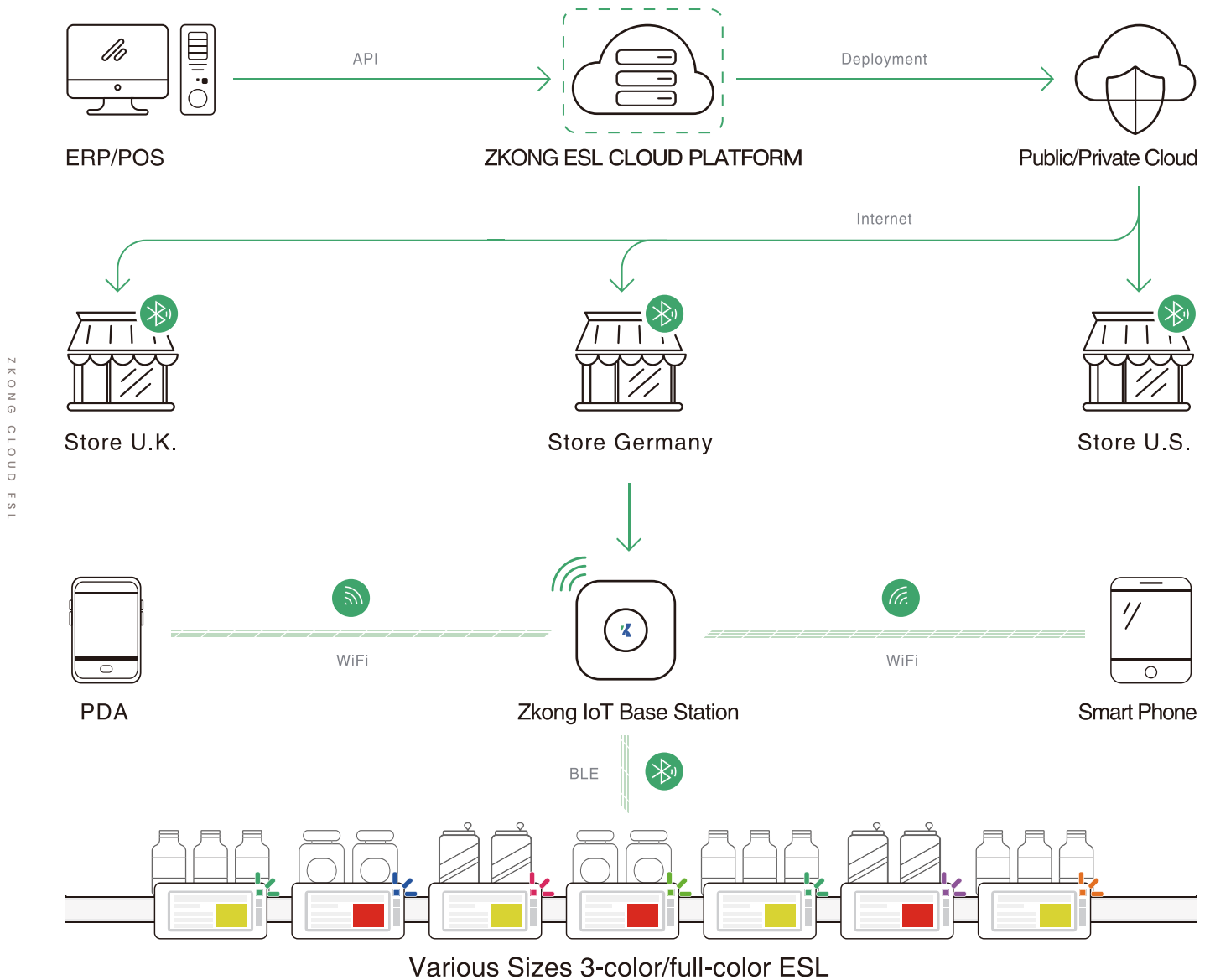


PRODUCT BROCHURE



Cloud ESL Total Solution

iR²pos CLOUD ESL SYSTEM



Perfectly meet various business needs for the purposes of operate, sales, cost-saving, safety, etc.



Solutions Leading The Industry

01

Real Cloud Management

We designed a real SaaS cloud architecture for ESL system. And our ESL system delivers at the lowest cost, and enables fast deployment when the retailers copy success from one store to another

02

Enterprise Application of Retail

Zkong's cloud platform provides a really easy way to connect with ERP/POS system, which it is more operative in a corporate environment, it quickly emerge with the user's system and perfectly emerge with the user's system

03

Business Success at Lowest Cost

Zkong's Cloud ESL solutions lead customer's business into a great success at the lowest cost, no matter how the ESLs are deployed or how many stores have been connected with the cloud ESL platform

04

Extendable To More Industries

Zkong's advanced wireless communication technology and project development experience engage customers into the infrastructures of more industries

The Digital Infrastructure at Forefront of Retail Industry



Electronic Shelf Label

New generation of ESLs enable stores necessary functions without installing servers. Apply Bluetooth, Wi-Fi, and Cloud Technology to most valuable solutions.





ESL > Wisdom Series

Dot Matrix E-paper Black/White



ZK21F | 2.13 " Screen

Dot Matrix E-paper Black/White



Size : 72*36.4*13.9mm
Screen : 48.6*23.7mm
Operate temperature : -25℃~40℃
Battery : 1200mAh /5Years
Color Support: Black White

ZK21 | 2.13 " Screen

Dot Matrix E-paper Black/White



Size : 72*36.4*13.9mm
Screen : 48.6*23.7mm
Operate temperature : 0~40℃
Battery : 1200mAh /5Years
Color Support : Black White

ZK29 | 2.9 " Screen

Dot Matrix E-paper Black/White



Size : 93.6*42.2*11.9mm
Screen : 66.9*29.1mm
Operate temperature : 0~40℃
Battery : 1200mAh /5Years
Color Support: Black White

ZK42 | 4.2 " Screen

Dot Matrix E-paper Black/White



Size : 105.3*94.5*12.3mm
Screen : 84.8*63.6mm
Operate temperature : 0~40℃
Battery : 2400mAh /5Years
Color Support: Black White



ESL > Wisdom Series

Dot Matrix E-paper Black/White/Red



ZKC21 | 2.13 " Screen

Dot Matrix E-paper Black/White/Red



Size : 72*36.4*13.9mm
Screen : 48.6*23.7mm
Operate temperature : 0~40℃
Battery : 1200mAh /5Years
Color Support: Black/White/Red

ZKC29 | 2.9 " Screen

Dot Matrix E-paper Black/White/Red



Size : 93.6*42.2*11.9mm
Screen : 66.9*29.1mm
Operate temperature : 0°~40℃
Battery : 1200mAh /5Years
Color Support: Black/White/Red

ZKC42 | 4.2 " Screen

Dot Matrix E-paper Black/White/Red



Size : 105.3*94.5*12.3mm
Screen : 84.8*63.6mm
Operate temperature : 0~40℃
Battery : 2400mAh /5Years
Color Support: Black/White

ZKD77 | 7.7 " Screen

Segment Code Screen Black/White



Size : 215.7*206.8*15mm
Screen : 179.4*81.54mm
Operate temperature : 0°~40℃
Battery : 4800mAh / 5years
Color Support : Black White



ESL > Beyond Series

Dot Matrix E-paper Black/White/Red (Yellow)



ZKC15S | 1.54 " Screen

Dot Matrix E-paper Black/White/Red (Yellow)



Size : 44.5*35.9*13.7mm
Screen : 27*27mm
Operate temperature : 0~40°C
Battery : 600mAh / 5years

ZKC21S | 2.13 " Screen

Dot Matrix E-paper Black/White/Red (Yellow)



Size : 72*36.4*14.3mm
Screen : 48.6*23.7mm
Operate temperature : 0~40°C
Battery : 1200mAh / 5years

ZKC42S | 4.2 " Screen

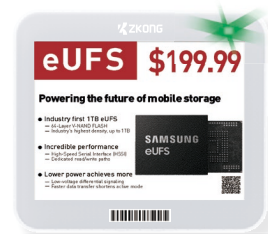
Dot Matrix E-paper Black/White/Red (Yellow)



Size : 105*91*13.2mm
Screen : 84.8*63.6mm
Operate temperature : 0~40°C
Battery : 2400mAh / 5years

ZKC42SP | 4.2 " Screen

Dot Matrix E-paper Black/White/Red (Yellow)

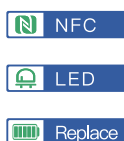


Size : 105*91.5*13mm
Screen : 91*77mm
Operate temperature : 0~30°C
Battery : 2400mAh / 5years



ZKC21SF | 2.13 " Screen

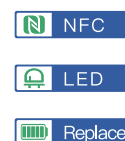
Dot Matrix E-paper Black/White/Red (Yellow)



Size : 72*36.4*14.3mm
Screen : 48.6*23.7mm
Operate temperature : -25°~40℃
Battery : 1200mAh / 5years

ZKC26S | 2.66 " Screen

Dot Matrix E-paper Black/White/Red (Yellow)



Size : 83*41*14.3mm
Screen : 60.1*30.7mm
Operate temperature : 0~40℃
Battery : 1200mAh / 5years

ZKC27S | 2.7 " Screen

Dot Matrix E-paper Black/White/Red (Yellow)



Size : 77.71*50*14.3mm
Screen : 57.3*38.2mm
Operate temperature : 0~40℃
Battery : 1200mAh / 5years

ZKC29S | 2.9 " Screen

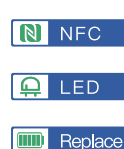
Dot Matrix E-paper Black/White/Red (Yellow)



Size : 90.41*41*14.3mm
Screen : 66.9*29.1mm
Operate temperature : 0~40℃
Battery : 1200mAh / 5years

ZKC58S | 5.8 " Screen

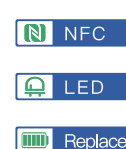
Dot Matrix E-paper Black/White/Red (Yellow)



Size : 138.3*111.8*13.8mm
Screen : 118.8*88.2mm
Operate temperature : 0~40℃
Battery : 2400mAh / 5years

ZKC75S | 7.5 " Screen

Dot Matrix E-paper Black/White/Red (Yellow)



Size : 185*124.3*13mm
Screen : 163.2*97.9mm
Operate temperature : 0~40℃
Battery : 4800mAh / 5years



ESL Valley Series

Dot Matrix E-paper Black/White/Red (Yellow)



ZKC42V | 4.2 "Screen

Dot Matrix E-paper Black/White/Red (Yellow)



Size : 104*87*14.9mm
Screen : 84.8*63.6mm
Operate temperature : 0~40℃
Battery : 1200mAh / 5years

ZKC58V | 5.8 "Screen

Dot Matrix E-paper Black/White/Red (Yellow)



Size : 135*110*9mm
Screen : 118.8*88.2mm
Operate temperature : 0~40℃
Battery : 1800mAh / 5years

ZKC75V | 7.5 "Screen

Dot Matrix E-paper Black/White/Red (Yellow)



Size : 180*121.8*9mm
Screen : 163.2*97.9mm
Operate temperature : 0~40℃
Battery : 2400mAh / 5years

ZKC116V | 11.6 "Screen

Dot Matrix E-paper Black/White/Red (Yellow)



Size : 266*190*9mm
Screen : 244*164mm
Operate temperature : 0~40℃
Battery : 3600mAh / 5years



ZKC133V | 13.3 "Screen

Dot Matrix E-paper Black/White/Red (Yellow)



Size : 298.3*225.5*9mm

Screen : 275*195mm*2

Operate temperature : 0~40°C

Battery : 3600mAh / 5years

ZKC58V-D | 5.8 " Dual Screen

Dot Matrix E-paper Black/White/Red (Yellow)



Size : 135*110*9mm

Screen : 118.8*88.2mm

Operate temperature : 0~40°C

Battery : 1800mAh / 5years

ZKC75V-D | 7.5 " Dual Screen

Dot Matrix E-paper Black/White/Red (Yellow)



Size : 180*121.8*9mm

Screen : 163.2*97.9mm*2

Operate temperature : 0~40°C

Battery : 2400mAh / 5years



ESL > Full Color Series

Full Color E-paper Screen



ZKE58V | 5.8 "Screen

Dot Matrix Full Color E-paper Screen

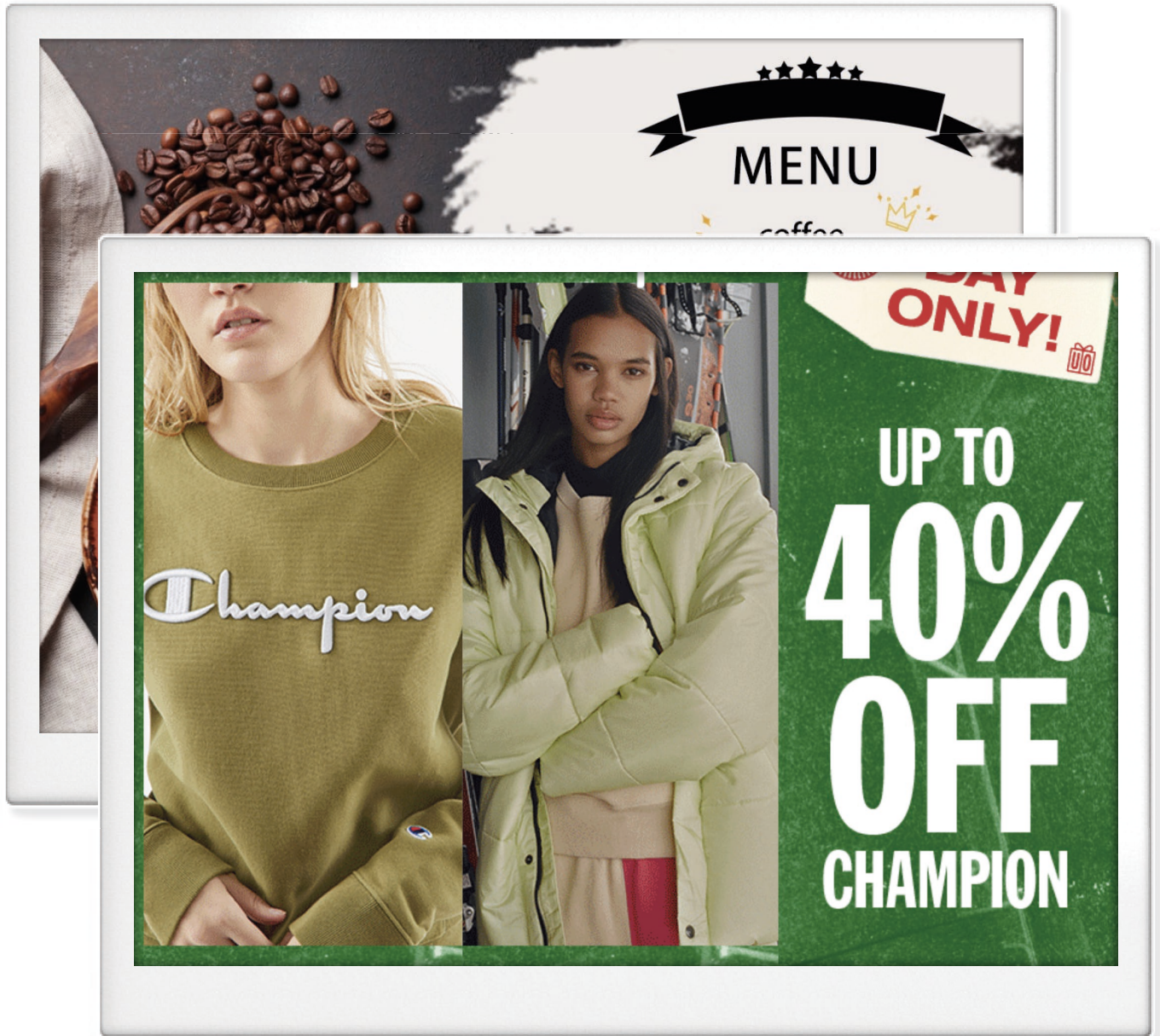
Size : 135.4*109.5*13mm

Screen :125.4*99.5mm

Operate temperature : 0~40℃

Battery :2400mAh / 5years

Replaceable battery



ZKF133V | 13.3 "Screen

Dot Matrix Full Color E-paper Screen

Size : 298.3*225.5*9mm

Screen :275*195mm

Operate temperature : 0~40℃

Battery :3600mAh / 5years

Replaceable battery



IR POS

AMG

Mercedes-Benz

Kraftstoffverbrauch kombiniert: 13,9 l/100 km, außerorts: 9,5 l/100 km, innerorts: 21,4 l/100 km; CO₂-Emission kombiniert: 330 g/km
Die Angaben beziehen sich nicht auf ein einzelnes Fahrzeug und sind nicht Bestandteil des Angebots, sondern dienen allein Vergleichszwecken zwischen den verschiedenen Fahrzeugtypen.

Ein Marken der Daimler AG. www.mercedes-amg.com

Luftwiderstand zwecklos.

SL 63 AMG. A different fast.



AMG

Mercedes-Benz

Kraftstoffverbrauch kombiniert: 13,9 l/100 km, außerorts: 9,5 l/100 km, innerorts: 21,4 l/100 km
Die Angaben beziehen sich nicht auf ein einzelnes Fahrzeug und sind nicht Bestandteil des Angebots, sondern dienen allein Vergleichszwecken zwischen den verschiedenen Fahrzeugtypen.

zkong

Contour & Define

NEW



LIFT. FIRM. SMOOTH. BE RADIANT.
THE TRANSFORMATIVE COLLECTION
FEATURING OUR NEW SCULPT + GLOW MASK.

zkong



LCD > Legendary Series

Stretched LCD Display



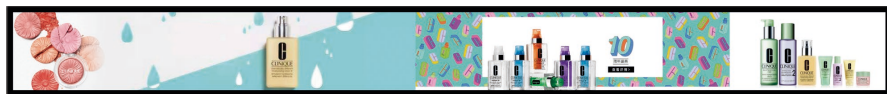
ZKL550 | 55" LCD

ZKL650 | 65" LCD

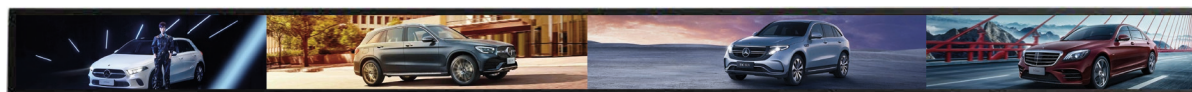




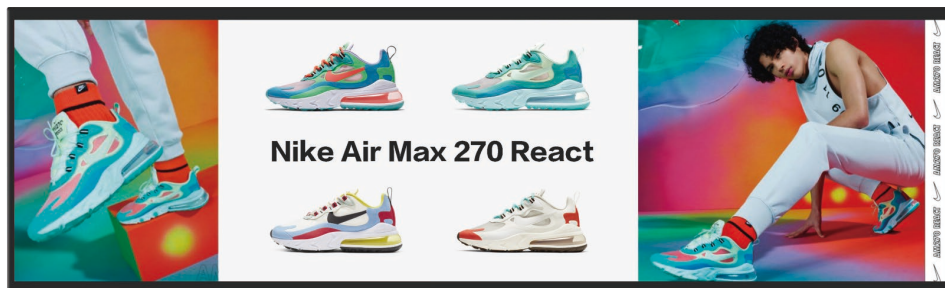
ZKL231 | 23.1" LCD



ZKL350 | 35" LCD



ZKL480 | 48" LCD



ZKL610 | 61" LCD





AP > Wireless Base Station

Advanced Wireless Communication Tech



ZAP-C

Size: 180*180*33mm
Operate temperature: -10~60°C
Power: 48V POE
Weight: 500g
Frequency: 2.4GHz+5GHz
Wi-Fi Speed: 1167Mbps
Coverage: Indoor 10m – 30m radius



ZAP-D

Size: Φ 103.2*149.6mm
Operate temperature: 0~45°C
Power: 12V DC
Frequency: 2.4GHz+5GHz
Wi-Fi Speed: 1167Mbps
Coverage: Indoor 10m–30m radius



ZAP-DM

Size: 184.5*109.5*30.3mm
Operate temperature: 0~45°C
Power: 12V DC
Frequency: 2.4GHz+5GHz
Wi-Fi Speed: 1167Mbps
Coverage: Indoor 10m–30m radius



CAMERA > AI Cameras

Motion Capture and Analysis

ZAP-S26

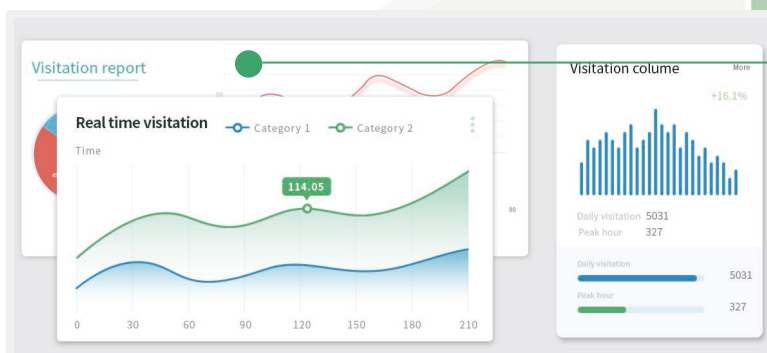
Person Detection



01



02

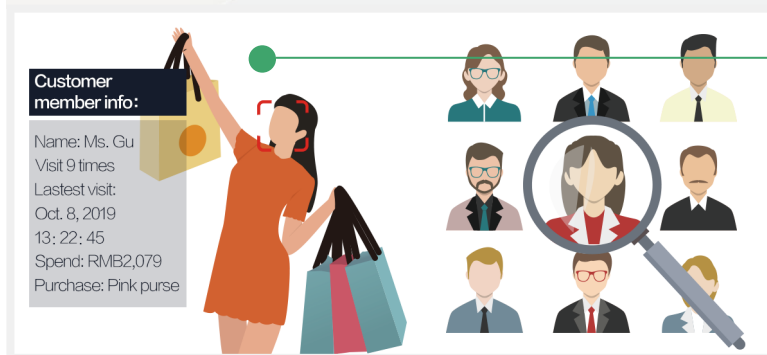


ZAP-S26

Motion Capture



03







ESL > Accessories

Adaptable for Different Environment



Aquatic food



Vegetables and fruits



Frozen food



Normal area



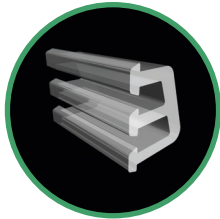
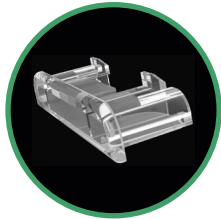
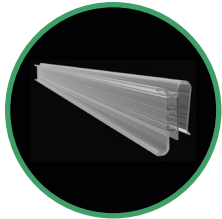
Beverages



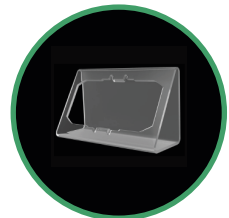
Baked food



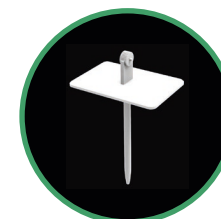
For shelf edge display



For irregular edge and flat surface display



For fresh food and frozen food display





01 Real Cloud Platform

A real cloud platform design and solution to manage equipment and process data at the lowest cost

02 Flexible Deployment

All types of cloud structures ready to be used, mixed cloud solutions to meet all kinds of environment

03 Massive Data Process

Greatly capable to deal with a great number of data, help retailers focus on sales by saving a lot time and cost

04 Unlimited Capacity

An unlimited capacity feature in fulfilling the demands of an ever-grow size of database and business scope

05 Template Self-Customized

Freely edit the template whenever and wherever, much easier to create and distribute upsell content to the shelves

06 Open API Service

Open API for building connection between Zkong ESL system and different types of ERP and POS systems for data transmit or function customize

07 Safe And Stable

AES (Advanced Encryption Standard) of 128-bit secures the system much safer and stabler than the others

08 Secondary Development

Support second development for extended business or management needs both for hardware and software



ADVANTAGES > End-to-end Manufacture

Flexible and Agile Customization

Color customized



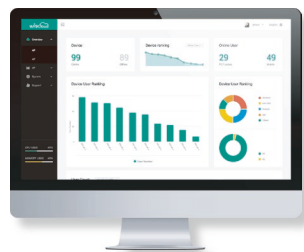
Screen frame customization



Logo / Brand Customization



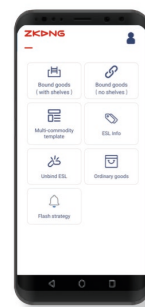
Software on Platform



Base station



App on PDA



Frame function
customize

Logo/color
customize

Accessories
customize

Software
customize



INDUSTRIES & CASE STUDY > New Retail

To Boost Sales and Increase Margins

R

One of the reasons that big retail chain stores who can put more resources on sales and marketing is that they have equipped with ESLs, and integrated the smart labels and IoT technology with their own system: in seconds, all the labels are updated with the latest data from head office without a failure. ESL triggers a happy journey for customers who want to be more engaged into the shopping environment and benefited from deeper interactions with stores.



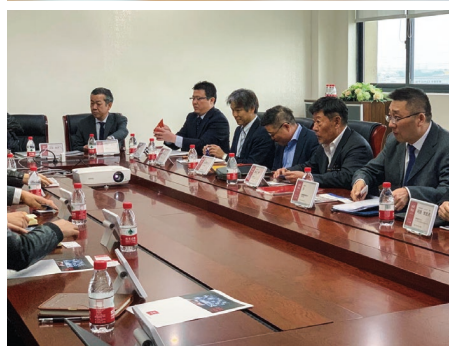


Digital Signage

To Cut Operate Cost and Lift Efficiency

D

Easy to deploy and adaptable to both new built and existed buildings without much efforts. This environment friendly solution has been successfully applied in any office, hotel, hospital and other spaces where signage has become more efficient through digital means. As it can be set as on any surface and characterized an ultra-low energy consumption, and is considered as the alternative of paper, more expensive and wired devices.





INDUSTRIES & CASE STUDY > Medical Service

To Improve Shopping Experience and Environment



In an aging society, medical treatment is in fast growing needs for patients, thus medical service plays a crucial role in modern society. Zkong ESL medical solution is just the unbelievable approach for hospital to manage wards and to work with their own systems for extended services. ESL also performs as a fundamental tool to IoT system to optimize drug management.



Logistic & Warehouse

To Raise Inventory Accuracy and Reduce Handling



Flexible and extendable for more functions, Zkong ESL solution can easily improve the productivity in the process of grounding, sorting, and counting for the stock, and raise efficiency and accuracy of warehouse. Well connected to the ERP systems, fully displayed item info, instant stock level update, and functional assistance of LED alert on the labels for improving inventory accuracy, stock-out risk prevention and cost control.

