

ZKONG CLOUD ESL

Accessory Guide

WWW.ZKONG.COM

-Accessory Installation Index-

- 01. Table Holder Installation
- 02. Ice-Pin Installation
- 03. Flexible Clamp Installation
- 04. Flexible Table holder Base Installation
- 05. ESL Rail Installation
- 06. Bulk ESL Clips Installation
- 07. Triangle Holder Installation



- 01 – Table Holder



Bedframe



Installation Blade



Big Size ESL Base:

Composed of Bedframe Fix Pad .Fit for 4.2 inches, 5.8 inches, 7.5 inches ESL.

Application Scenarios : spacious and simple area, usually with big size open style racks and counters, such as mobile phone business hall, etc.

Application Scenarios For Table Holder



Mobile phone business hall、mobile phone flagship store



Open type work station



Buffet restaurant



Aquaculture



TG (Type genus)



Table Holder(for above 4.2 inch labels) fits onto those scenarios and Satisfies the requirement of open type ESL.

Assembly



Put the installation blade into groove on the back side of label and Make sure the position is aligned.



Turn the installation blade straight down to fasten.



Make sure it is angled straight down.



Application Case



Note:gently insert into the installation blade groove



Insert the base blade into the red point.

Remarks:

Make sure install the ESL labels in the right direction of the groove.

- 02 – Ice-pin Insert



Ice-pin Base



Steering Head



Installation Blade



Ice Pin Insert:

Ice stock insert is composed of the Ice Pin, steering head and installation blade. Fit for: the 4.2 inches,5.8 inches,7.5 inches ESL.

Application Scenarios :Fruit section or Freeze fresh food section ,usually with ice. The application method is put the ice pin insert into the ice directly.

Application Scenarios for the Ice Insert



Chilled fresh shelves

Remarks: Ice pin insert is used in special scenarios like ice tank or sponge goods shelves.

Assembly



Put the installation blade into groove at the back side of label and Make sure the position is aligned.



Turn the installation blade to straight down to fasten.



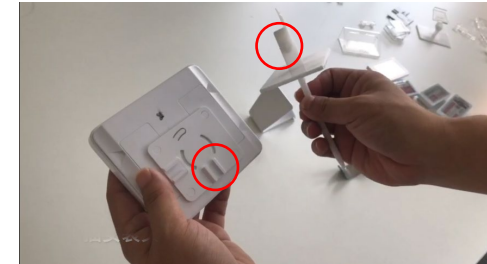
Make sure one of the groove straight down.



Sample usage

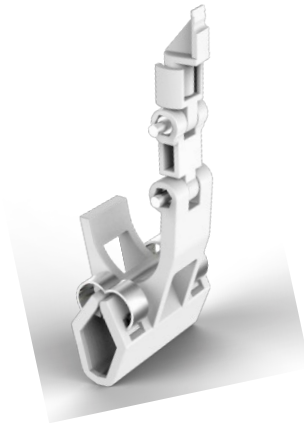


Insert the ice stock into groove



Insert the clamp into installation blade to the red point.

- 03 Flexible Clamp



Flexible Clamp



Installation blade



Consists of the installation blade and the flexible clamp. For the ESL labels use sizes (4.2/ 5.8/ 7.5 inches).

Application Scenarios :

Suitable for fruit shelves, basket shelves and other varied application scenarios, especially in the fresh food industry.

Assembly



Put the installation blade into groove at the back side of label and Make sure the position is aligned.



Turn the installation blade anticlockwise to straight down to fasten.



Sample usage



Effect picture



Insert the clamp into installation blade to the red point.

Application Scenarios For Flexible Clamp



Wood shelves



Fruit basket shelves



Open type wood shelves



Aquaculture

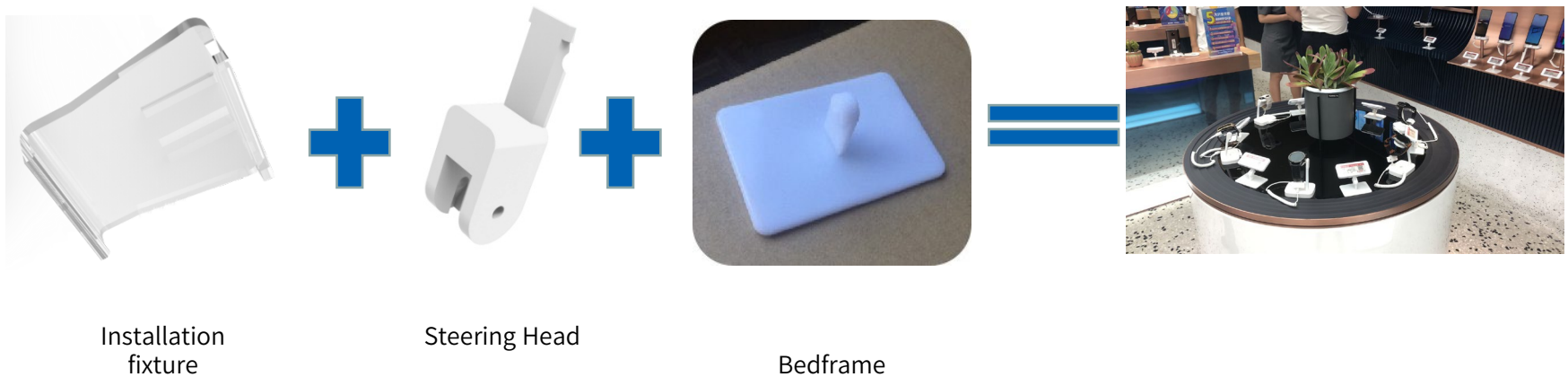


Dried good glass-frame cabinet



Flexible Clamp is suitable for shelves with a maximum thickness of 5 cm and a more than 2 cm depth edge in fresh food scenarios.

- 04 –Flexible Holder



Small ESL Base:

consist of installation fixture, a steering head ,and Bedframe. And the display angle is adjustable from 0 to 180 degrees mainly for the small sized ESL (2.13、 2.6、 2.9、 2.7 inches).

Application Scenarios For Flexible Table Holder



Business hall or mobile phone flagship store



Table



Buffet restaurant



Freezer



TG (Type genus)



The application scenarios of table holder and flexible table holder is same, Different sizes of ESL tags require different holders.

Assembly



The ESL tag slots into Installation fixture



Steering head fixed onto the bedframe



Steering head inserts into installation blade.



Sample usage

Remarks: The installation fixture for ESL (1.54、 2.13 、 2.9、 2.7、 2.6 inches);The Steering head and base can also could be install in the installation blade.

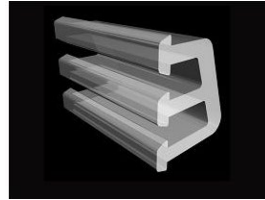
- 05 - ESL Rails



ESL rail



END cap for esl rail



ESL angle adjuster



ESL Rails:

Applied in traditional shelves to fix the ESL labels(1.54,2.13,2.6,2.7,2.9 inches). Rails are ordinary types which fit for wide variety of ESL labels from other manufactures.

Application Scenarios For ESL Rails



Stack shelf



Warehouse Shelf



Supermarket customized shelf



Ordinary supermarket



Beverage Showcase



3 meter air cooler



Remarks: The application scenarios of ESL Rails are in supermarkets, fridges, beverage showcases or other long-type and higher density arranged shelves.

The Rails And Labels Onto The Shelving Assembly



Selection method of ESL Rails:
Confirm the cross-section of the shelf, that marked with a red border in the picture



measure the length of the panel



Simply slide the label into the ESL



End caps for the ESL Rail are installed onto the rail to keep ESL labels securely in place.



调角件主要调整导轨角度

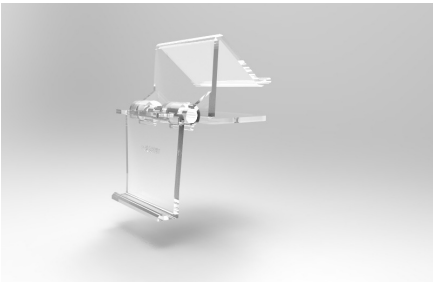
An ESL angle adjuster are installed into the rail to adjust viewing angles



Sample usage

Remarks: Different shelves need different types of rails. Please inform our sales staff of the results for steps 1 & 2.

- 06 - Bulk ESL clip



Bulk big ESL clips
Suitable for wood and many other materials with a thickness of 12-25 mm.



Bulk small ESL clips
Suitable for wood and many other materials with a thickness of 3-10 mm.



Bulk ESL clip:

Designed for bulk food area, some wood customized shelf and screen on office desk. Bulk ESL clip for ESL labels (1.54/2.13/2.9/2.7/2.6 inches) are widely-used and look well.

Application Scenarios Of Bulk ESL clip



Fruit shelves



Basket shelves



Market wood shelves



Cake shelves



Screen in office



Bulk dried fruit shelves



Remarks: Bulk ESL clips are widely used to many materials shelves with a thickness of 12-25 mm which is not suitable for the installation of ESL rail.

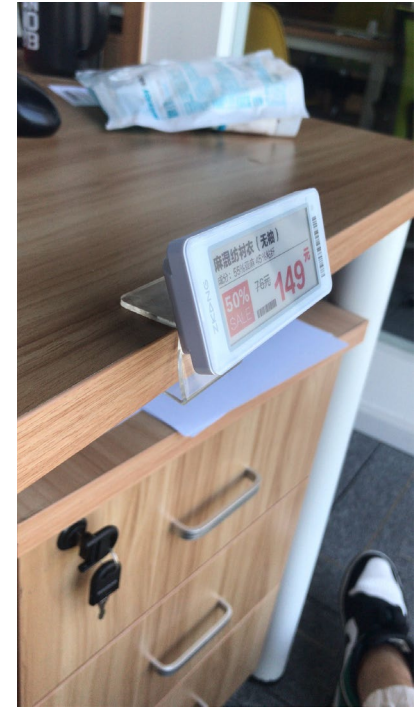
Assembly



The installation of bulk ESL clip is relatively simple. Put the labels in Clip.



Adjust viewing angles to arrange the labels in different height



Close-up effect ESL



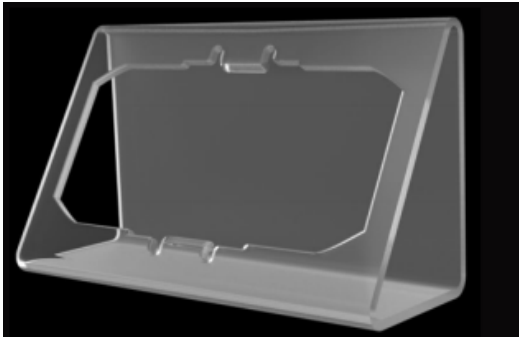
withdrawal tool is necessary
disassemble the ESL Clip



Sample usage

Remarks: Different thickness shelves need different size clip. Thus, accurate measurement is needed to choose suitable size ESL clips.

- 07 –Triangle Holder



Triangle holder



Triangle Holder:

For ESL labels size (1.54/ 2.1/ 2.7/2.6 inches). Compared to small base, triangle ESL base have a better look and easier installation. However there is only two viewing angle.

Application Scenarios Of Triangle Holder



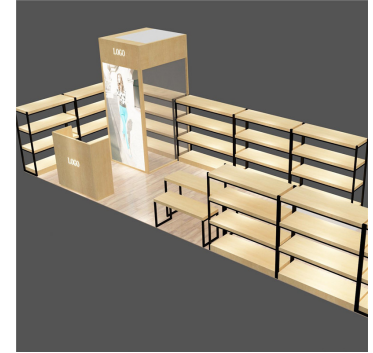
Mobile phone flagship store



Open type ESL



Market wood shelves



ESL of shoes or bags



Office table



Buffet restaurant



Remarks: Triangle Holder has the same application scenarios with small holder, both are used to open type shelves.

Triangle Base Assembly



直接将电子价签卡进三角摆台中

Push the ESL labels into triangle holder directly.



取出时，用手从价签背后顶出即可

Push on ESL labels (1.54/ 2.13/ 2.6 inches) from the back side of base to easily remove it



2.7寸价签需要用工具撬出来

Use the withdrawa tool to easily remove 2.7 inch ESL label



Case



Viewing angle 2



Viewing angle 1

Remarks: Triangle Holder suitable for the open type shelves on luxury shop like exclusive shop or flagship shop.